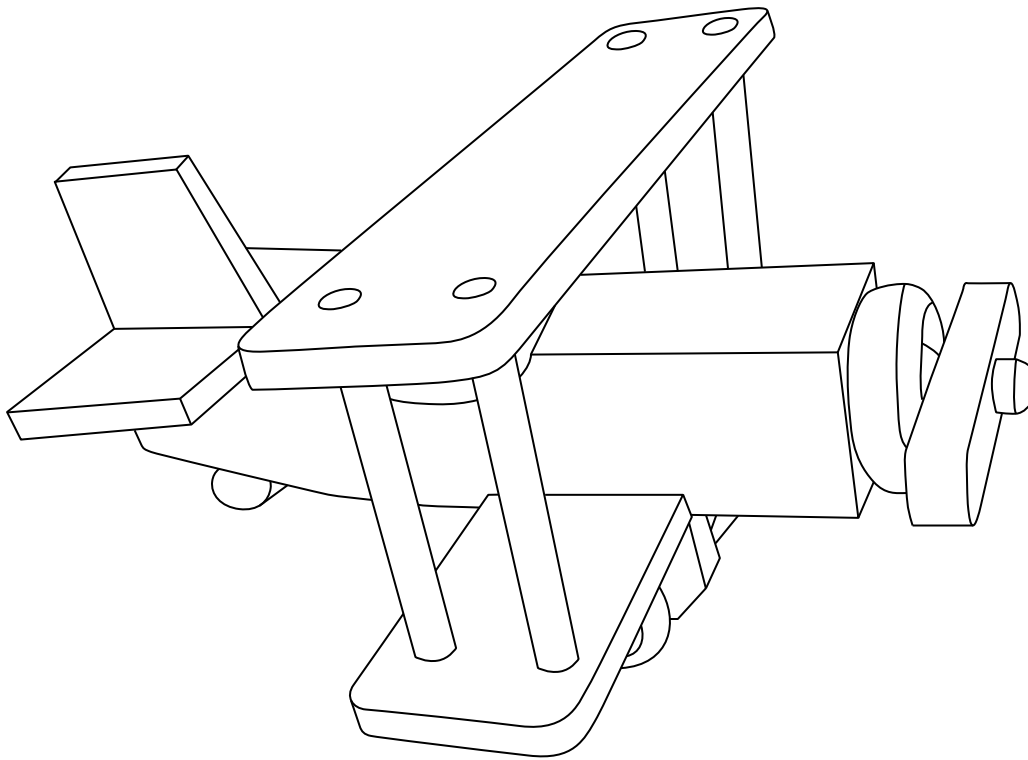
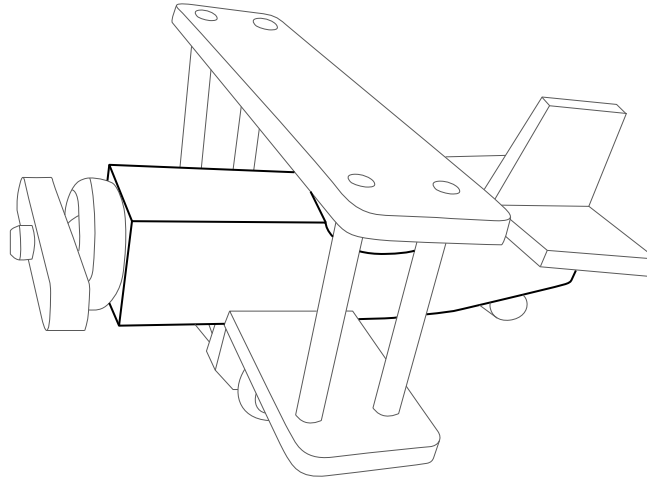


Toy Wood Biplane

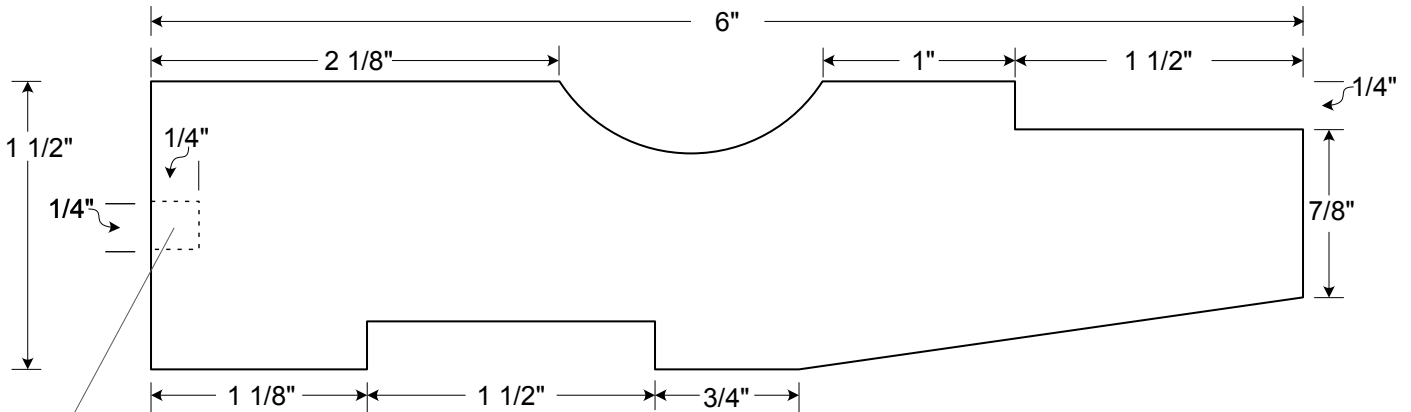


Biplane Fuselage



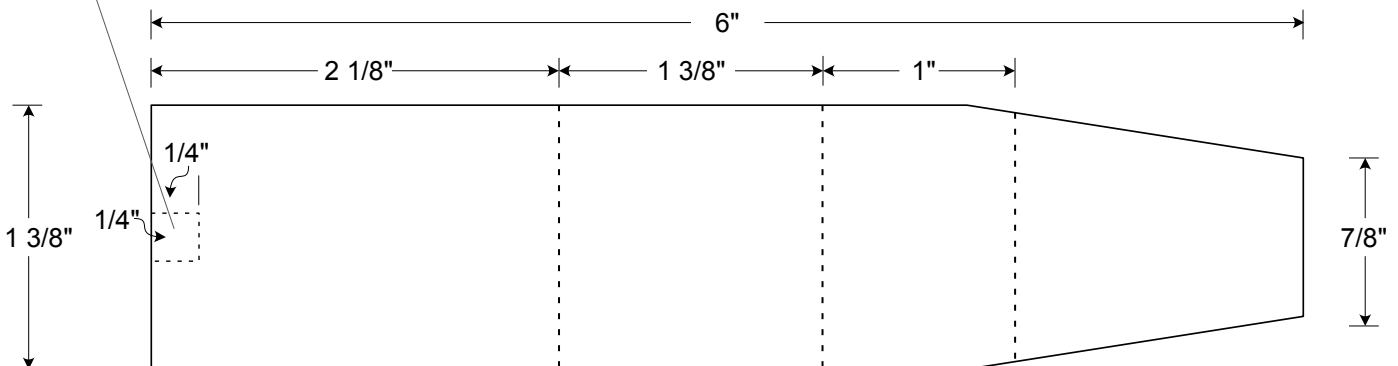
General Note: Round over or soften all sharp edges before glue-up.

Fuselage Side View

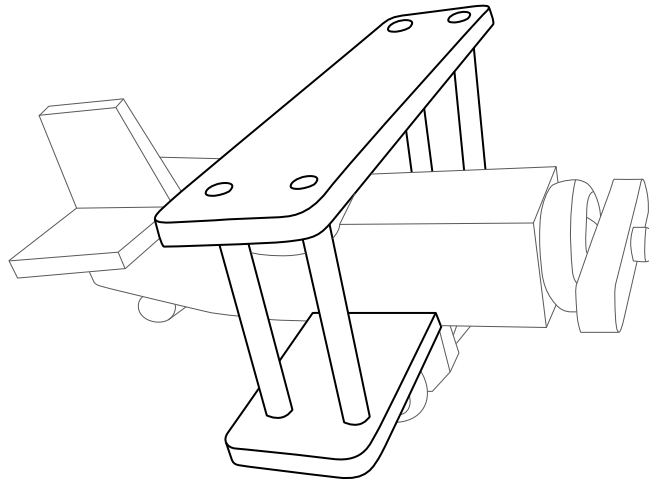


The 1/4" diameter hole for the propeller should be centered on the front of the fuselage

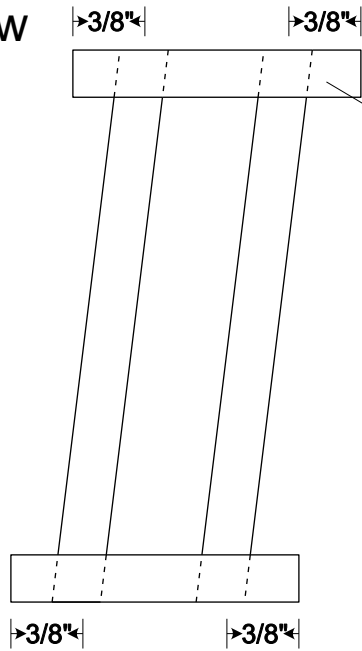
Fuselage Top View



Biplane Wings (make two wings)



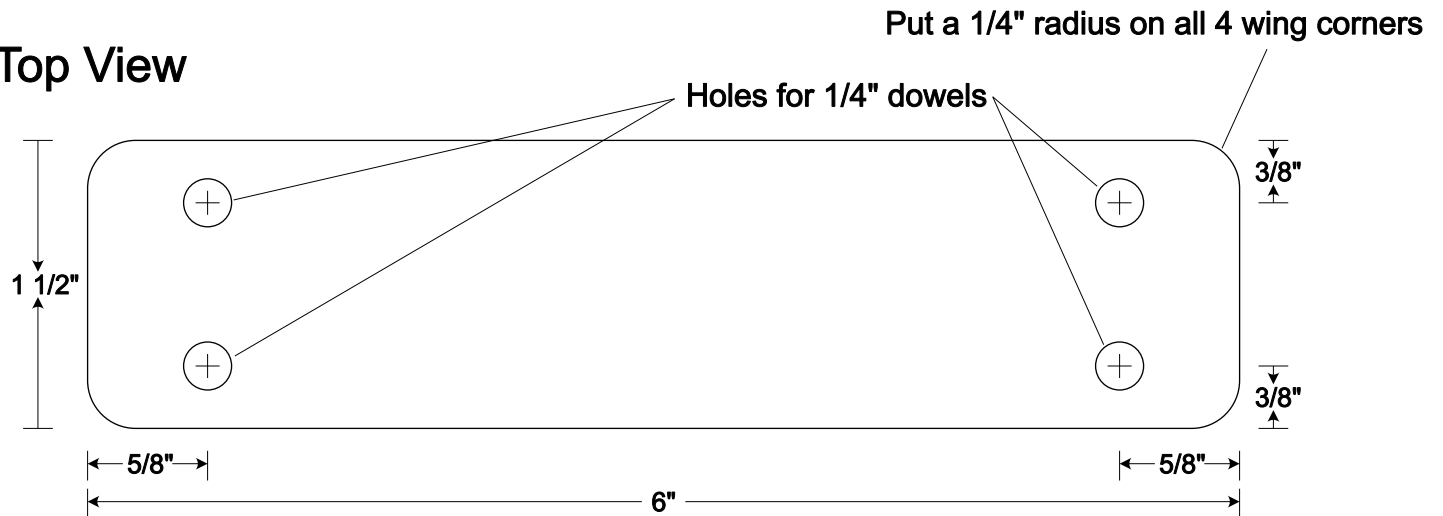
Side View



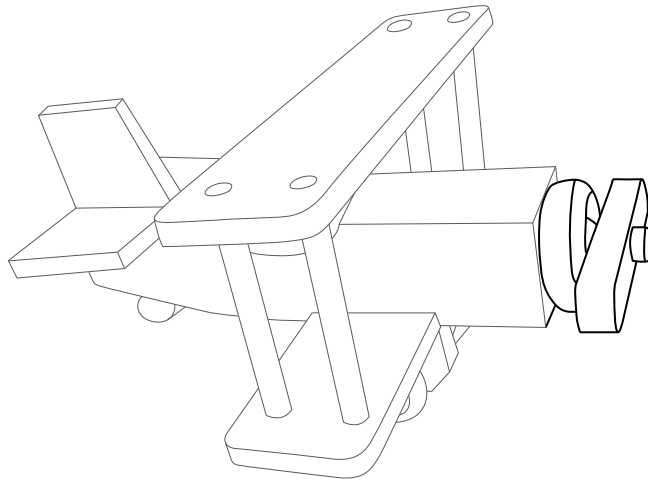
Drill holes at 7° angle.

Trim dowels flush with top of upper wing and bottom of lower wing.

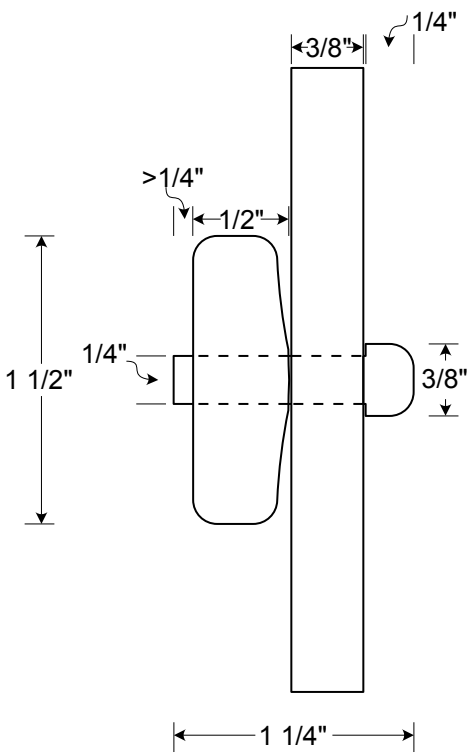
Top View



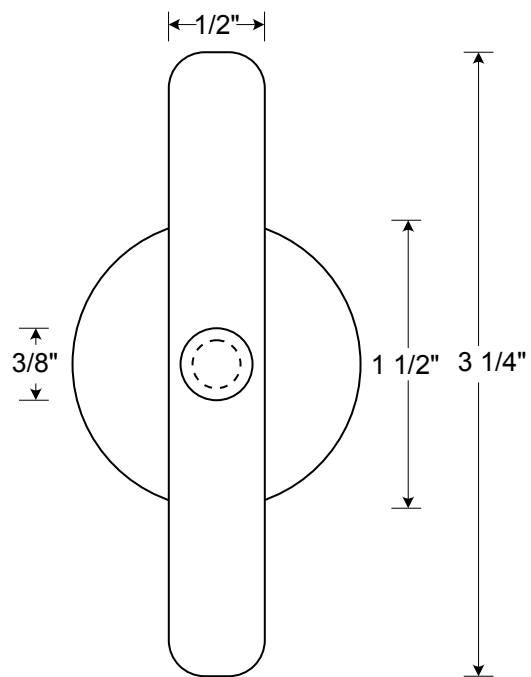
Biplane Propeller



Propeller Side View



Propeller Front View

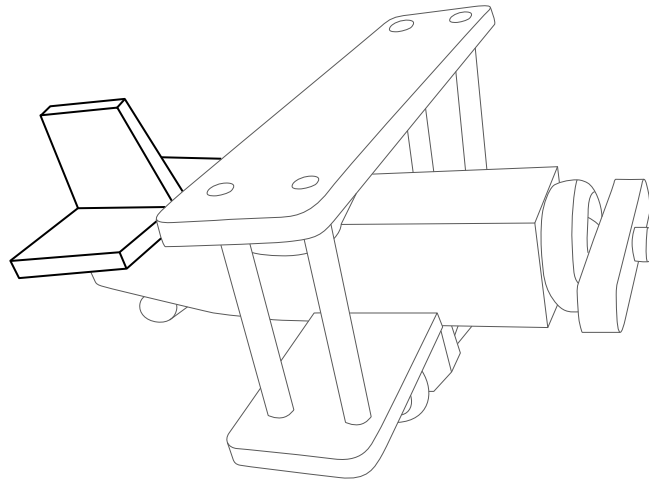


The propeller assembly consists of the propeller that you make and a store bought 1 1/2" diameter wood wheel, threaded on to a store bought 1 1/4" long axle.

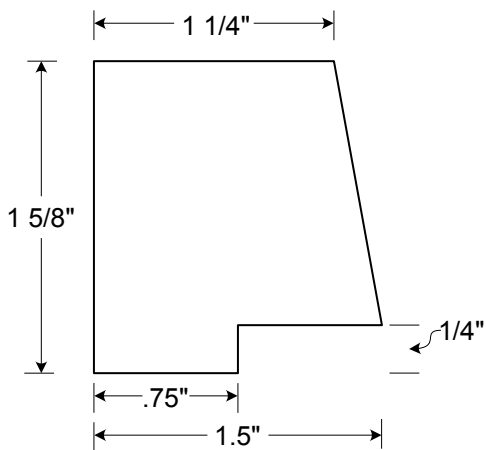
Push the propeller and wheel on tight enough so that they don't wobble, but loose enough that the propeller turns easily.

Glue the remaining stub of the axle into a hole in the front of the fuselage. Also, glue the flat back of the wheel to the front of the fuselage.

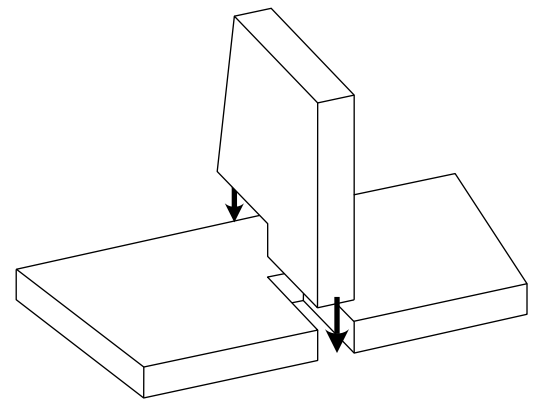
Biplane Tail



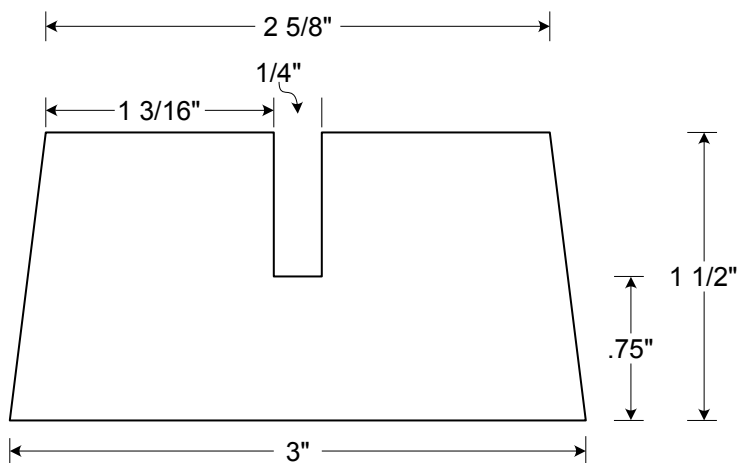
Fin Side View



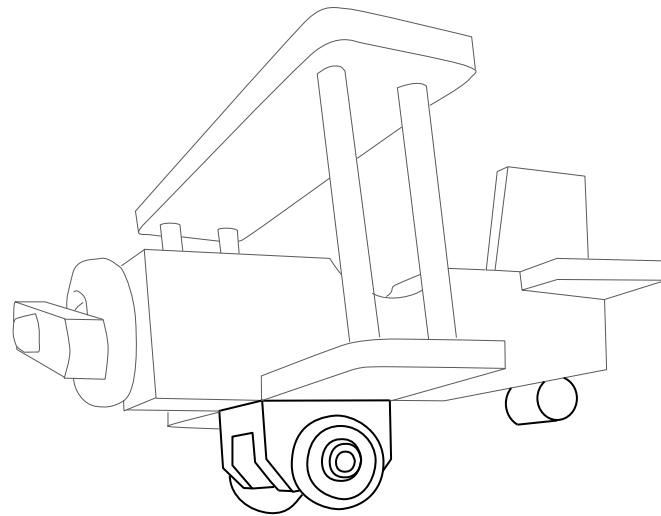
Apply glue and insert tab of fin into slot in tailplane



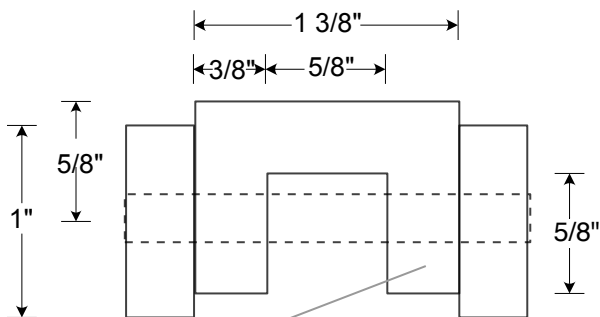
Tailplane Top View



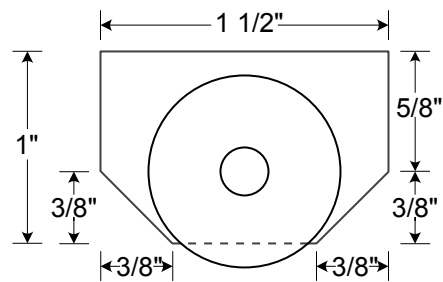
Biplane Landing Gear and Rear Roller



Landing Gear Front View

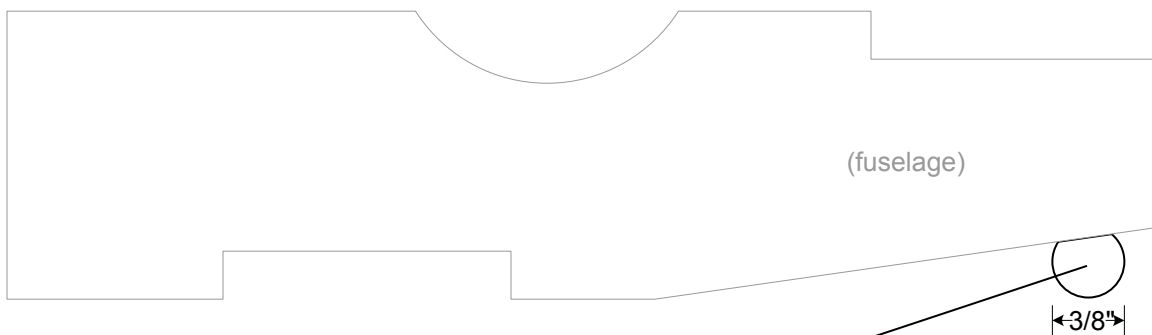


Landing Gear Side View



It is easier and safer to make this piece out of one long board and then cut several to length.

Rear Roller Side View



Rear Roller Rear View

